

BPCS / ERP_{LX} Migration to SAP

Overview

Is your company considering moving from BPCS / ERP_{LX} to SAP? Are visions of all the re-training, getting acclimated to a new system, changes in terminologies, and loss of functionality keeping you awake at night? And what about those custom data collection processes that were developed specifically for your operations? What's it going to cost and how long will it take to get those replicated in a new system?

As a TransitionWorks Software customer, rest assured that your shop floor and warehouse can continue to operate with the same dependability, accuracy and proficiency you've grown accustomed to. The automated data collection processes that currently control your receiving, picking, transfers, and shipping will never miss a beat. Your TransitionWorks' real-time inventory visibility solution migrates right along side you and will integrate into SAP without your production or warehouse personnel even realizing you've changed ERPs.

Why decrease your bottom line by spending even more money on an inventory module that may not meet your needs? You implemented a TransitionWorks Software inventory management solution, so your investment is protected! Talk to us before you make a costly mistake.

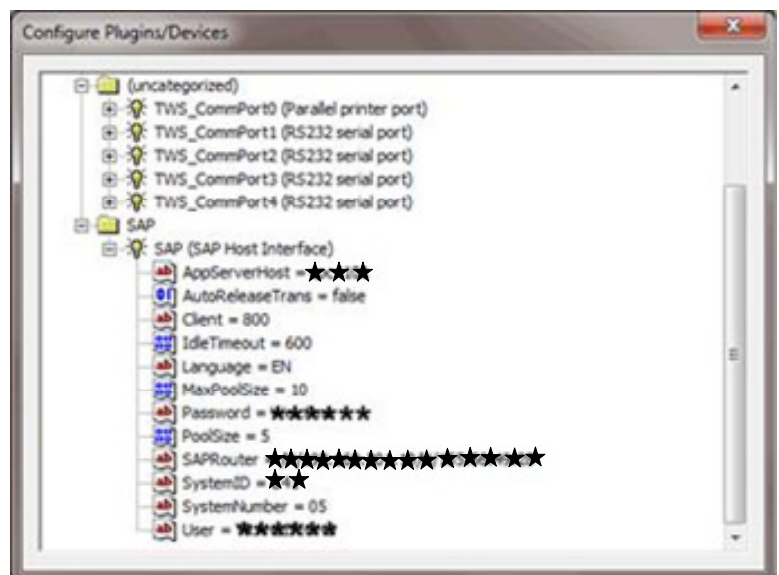
TransitionWorks Software Integration for SAP

TransitionWorks now extends the Auto Identification and mobility capabilities of SAP utilizing the proven TransitionWorks Design Time Studio which drives thousands of mobile business processes around the world. TransitionWorks has included access to SAP's .Net connector as a standard operation in version 5.6. This opens up the full range of SAP BAPIs (Business Application Program Interface), RFC (remote function calls) and Idocs (Intermediate Documents). Business processes may now be developed using TransitionWorks' graphical process modeling interface and linked to SAP interfaces for data posting and retrieval. Existing customers who utilize TransitionWorks data collection solution may maintain their current environment by utilizing data mapping and posting transactions created in TransitionWorks.

SAP Implementation

TWS SAP Pseudo-Device Interface

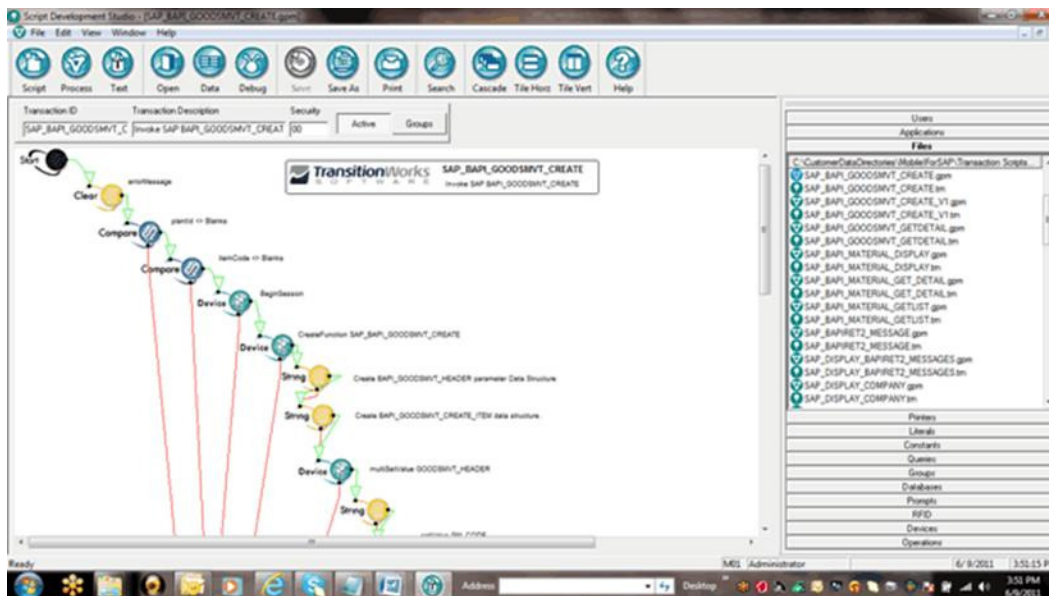
TransitionWorks Software implements support for SAP with a pseudo-device driver (a TWS 5.6 driver DLL that connects to a SAP server instead of an actual device). The Device plug-in and operation of TransitionWorks allows introduction of new devices and new functionality to the TransitionWorks Platform without changing the base functionality of the Auto Id Data Collection platform. This "device" driver was built over the SAP .Net connection and exposes the functionality of the SAP APIs to the standard TransitionWorks processes. The SAP plug-in is installed in the TransitionWorks platform and the connection credentials are entered into the plug-in configuration.



Interface Transactions using the Device Operation

Business logic workflows are created in TransitionWorks Design Studio. The device operation is used to create interfaces into SAP by creating instances of specific BAPIs (Business Application Process Integration) and executing the desired methods in them. TransitionWorks software already had business logic created to collect data for warehouse inventory transactions using mobile devices. A layer of business logic was created to take this data and map it to the corresponding BAPI parameters, invoke the BAPI and then receive the results.

Example of An Inventory Adjustment (INVTRAN transaction a into SAP)



SAP[®] Certified
Integration with SAP Applications

SYBASE[®]
An SAP Company

Partner

For more information contact your sales representative, e-mail us at support@transitionworksoftware.com, or give us a call at +1.336.885.1373.